

# Log Archiver For Configuration Manager

## v2.1

### ADVANTAGES

- Efficiency
- Limited investment
- Productivity

### SYSTEM

#### REQUIREMENTS

- x86 and x64 systems
- .NET Framework 4.0
- Windows Server 2003 SP2 or later
- Compatible with Windows Server 2012
- SQL Server 2005 or later (Express Edition supported)
- Compatible with SQL Server 2012
- SMS 2003 or later
- Compatible with SCCM 2012

### CONTACT

ISYS Inside-System

197, Rue Pierre Cazeneuve

31200 Toulouse

France

email: [contact@inside-system.com](mailto:contact@inside-system.com)

web: [www.inside-system.com](http://www.inside-system.com)



- Compatible with Microsoft System Management Server 2003, Configuration Manager 2007 and Configuration Manager 2012.
- All sites supported (central, primary and secondary). Remote site systems supported.
- Easy to install and configure. No additional workload required.
- Improved productivity for critical situations analysis and resolution on your Configuration Manager infrastructure.

### The backup solution for SMS and SCCM log files.

**The first archiving solution.** New version of the first archiving solution for SMS and SCCM log files. Now embedded with 2 components: the Log Archiver© service and the Log Archiver© administration console.

**Necessary for every infrastructures.** Log Archiver© is a must-have for all kind of infrastructures from the biggest, where the number of log files is important, to the smallest, generating less log data but where the administration and monitoring are not a daily priority.

### 2 editions available

**Standard Edition:** designed for stand-alone or secured environments.

**Professional Edition:** designed for multi-sites and more complex infrastructures.

### Why choosing Log Archiver©

- Optimize your analysis and resolution capacity for critical situations
- Control history and traceability
- Maximize availability of your infrastructure
- Deliver an exhaustive log data to your support, including Microsoft support.

### COMPATIBLE WITH:

Microsoft  
Systems Management  
Server 2003

Microsoft  
System Center  
Configuration Manager 2007

Microsoft  
System Center 2012  
Configuration Manager





# Log Archiver For Configuration Manager v2.1

## ADVANTAGES

- Efficiency
- Limited investment
- Productivity

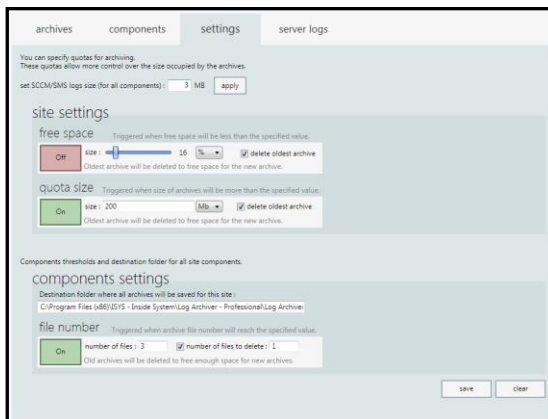
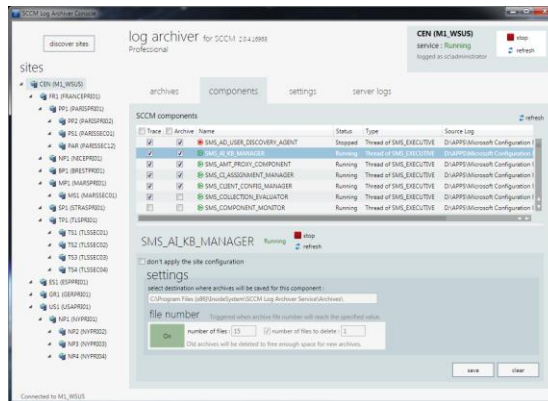
## SYSTEM

### REQUIREMENTS

- x86 and x64 systems
- .NET Framework 4.0
- Windows Server 2003 SP2 or later
- Compatible with Windows Server 2012
- SQL Server 2005 or later (Express Edition supported)
- Compatible with SQL Server 2012
- SMS 2003 or later
- Compatible with SCCM 2012

## CONTACT

ISYS Inside-System  
 197, Rue Pierre Cazeneuve  
 31200 Toulouse  
 France  
 email: [contact@inside-system.com](mailto:contact@inside-system.com)  
 web: [www.inside-system.com](http://www.inside-system.com)



**Unlimited log files backup.** Log files are compressed. You can backup months of activity in just a few hundreds of mega octets.

**Disk space control.** Configure archive thresholds to automatically control the disk space. Oldest log files are automatically removed when thresholds are reached.

**Simplified administration.** Automatic discovery of the Configuration Manager hierarchy and all its components. With the Log Archiver® console you can manage the entire infrastructure. Once configured, the archiving solution is totally autonomous. No additional workload is necessary.

**Archive advanced features.** Log Archiver® helps you find and extract archives.

**Help for critical situation analysis and resolution.**

With Log Archiver®, you will always have a detailed and exhaustive view of your Configuration Manager activity to maximize your analysis and resolution capacity during critical situations.

Editions	Standard Edition	Professional Edition
Compatibility with SMS 2003, SCCM 2007, SCCM 2012	•	•
Central and primary sites	•	•
Secondary sites		•
Automatic component discovery	•	•
Automatic archiving	•	•
Automatic archive compression	•	•
Disk space management	•	•
Archive extraction	•	•
Automatic hierarchy discovery		•
Multi-site connection		•

### COMPATIBLE WITH:

