

# Web Console For Configuration Manager

## V1.0

### ADVANTAGES

- Web access
- Security
- Productivity

### SYSTEM

#### PREREQUISITES

- x86 and x64 systems
- .NET Framework 4.0
- IIS 7.0 or later
- Windows Server 2003 SP2 or later
- Compatible with Windows Server 2012
- SMS 2003 or SCCM 2007

### CONTACT

ISYS Inside-System  
 197, Rue Pierre Cazeneuve  
 31200 Toulouse  
 France  
 email: [contact@inside-system.com](mailto:contact@inside-system.com)  
 web: [www.inside-system.com](http://www.inside-system.com)



- Web access secured by roles and SCCM permissions.
- Designed for complex environments with multiple forests and domains.
- Easy to install and configure. No additional administration workload needed.
- Improved productivity: fast web interface, with multiple wizards to handle more complex tasks. Improved pages browsing and navigation.
- Extendable web console. Additional modules can be developed and integrated on demand.

### Web interface for SMS and SCCM infrastructures.

**Multi-platforms solution.** The Web console supports the most familiar web browser.



**Secured access:** Access your SMS or SCCM data in a completely secured environment:

- SSL supported,
- Authentication forms to access the web interface,
- Role-based modules,
- Native SCCM security guaranteed.

### Why choosing ISYS Web Console® for SCCM?

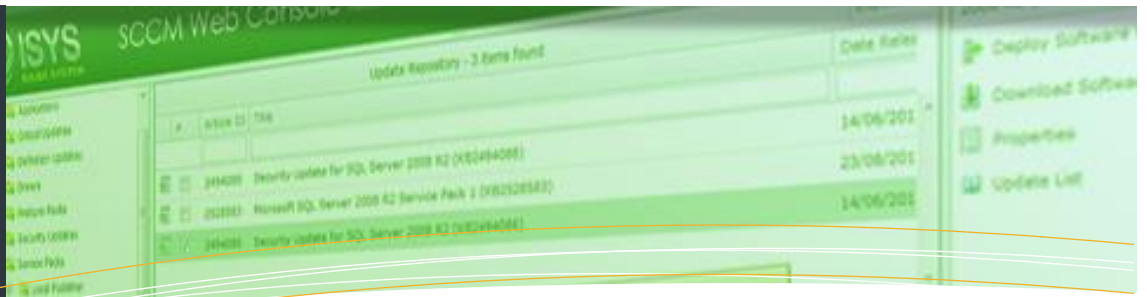
- Centralized and secured access to SCCM data
- Multi-platforms and multi-sessions
- No application installed. Only a web browser is required
- Web Client for SCCM can be integrated
- Extendable solution to carry out your own process and business specificities

**NEEDING A CUSTOM SCCM WEB INTERFACE TO MATCH YOUR BUSINESS AND PROCESS?**

**CONTACT US...**

### COMPATIBLE WITH:





# Web Console For Configuration Manager

## V1.0

### ADVANTAGES

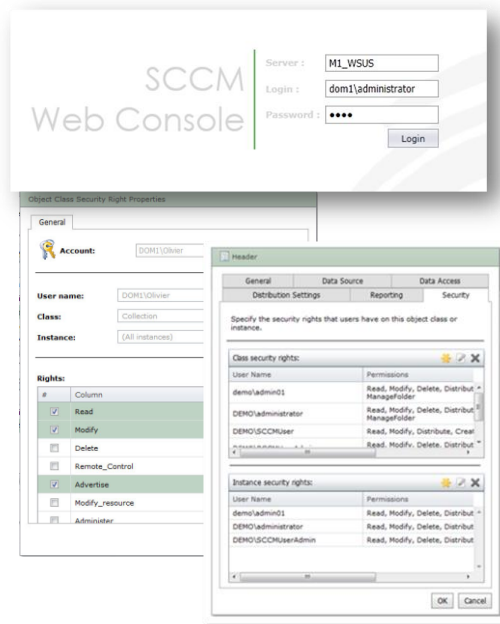
- Web access
- Security
- Productivity

### SYSTEM PREREQUISITES

- x86 and x64 systems
- .NET Framework 4.0
- IIS 7.0 or later
- Windows Server 2003 SP2 or later
- Compatible with Windows Server 2012
- SMS 2003 or SCCM 2007

### CONTACT

ISYS Inside-System  
 197, Rue Pierre Cazeneuve  
 31200 Toulouse  
 France  
 email: [contact@inside-system.com](mailto:contact@inside-system.com)  
 web: [www.inside-system.com](http://www.inside-system.com)



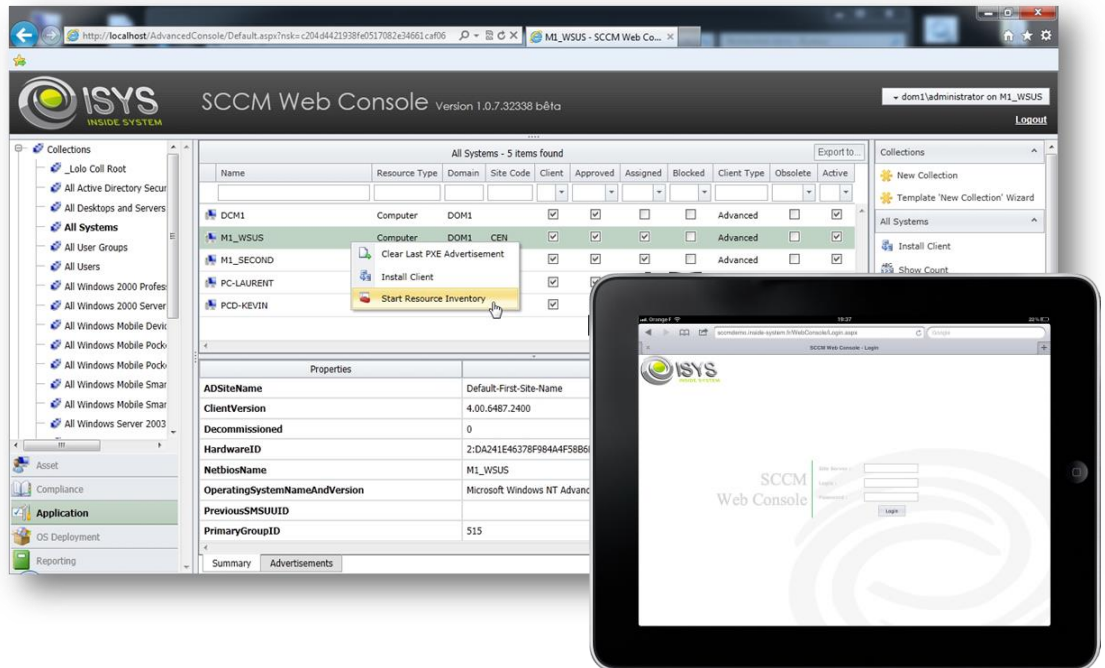
**Security.** Authentication form to access the interface.  
 Role-based modules. Native SMS / SCCM permissions guaranteed.

**Easy and flexible.** Only a web browser is required. No additional installation, configuration or permission is necessary on the user's workstation.

**Improved user experience.** Smooth and fast browsing with filtering areas. Multi-select and « Drag and Drop » are supported. More intuitive navigation between objects and pages.

**Customization.** Numerous wizards available to carry out more complex tasks. These wizards can be customized with templates to improve your productivity.

**Extendable.** Additional modules can be integrated on demand.



### COMPATIBLE WITH:

